



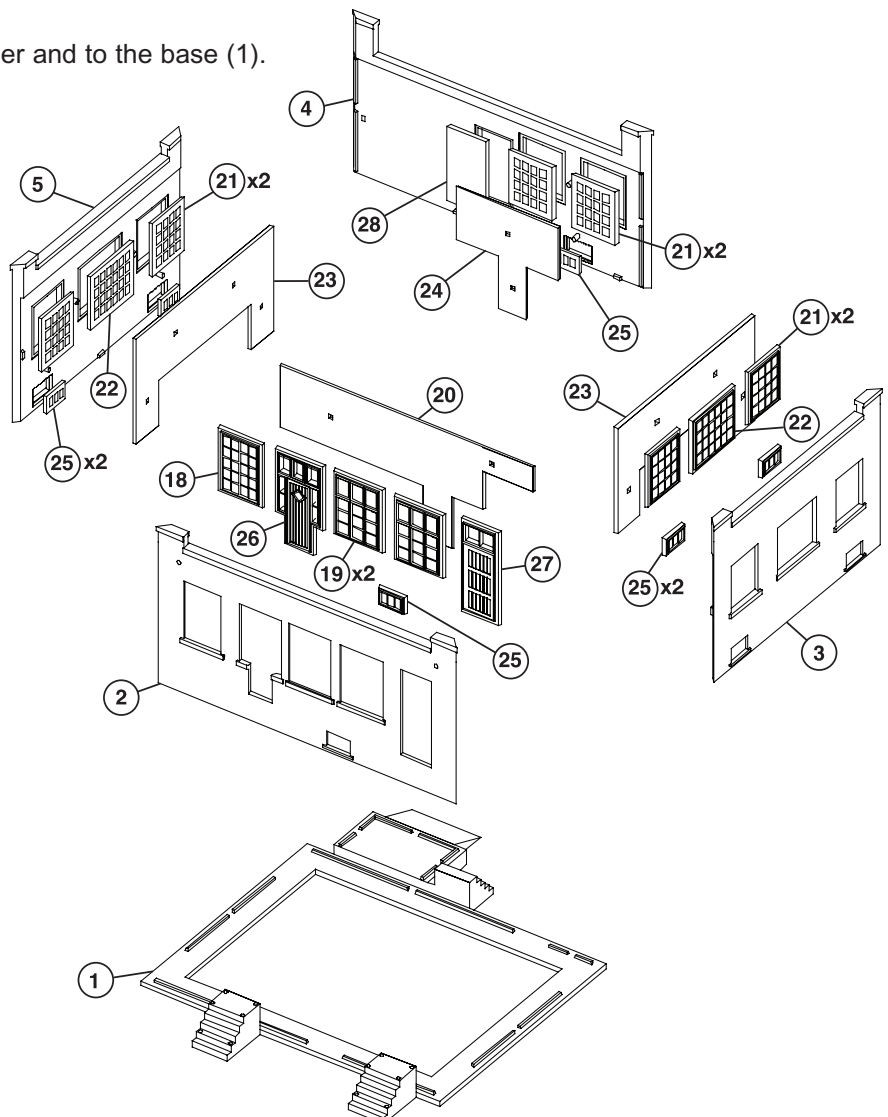
N Structure Kit INDUSTRY OFFICE 933-3834

Thanks for purchasing this Cornerstone Series® kit. Please read all instructions before starting. All parts are molded in styrene plastic, so use compatible paints and glues to finish your model.

Most industries started out with offices and operations under one roof. But as space was needed for expansion, separate office buildings became common. Despite their small size, no other building on the property did as much work under one roof as the office. Unlike manufacturing facilities that had to be built in a specific location, the office could be placed wherever it was accessible to salesmen, job applicants and other visitors. Many faced a main street, and had their own parking lot or entrance gate. Due to their high visibility, they were designed to inspire confidence and often constructed of brick with dignified trim elements. This also required they be remodeled fairly often to keep them looking modern. Based on a Milwaukee Road prototype used as a yard office, this building is ideal for any large industrial complex, such as a brewery, steel works and more. By itself, it can also be used as a small business.

For additional items to detail your scene, stop by your local hobby shop, visit us online at waltherscornerstone.com, or see the latest Walthers Model Railroad Reference Book.

1. Glue the windows (18, 19, 21, 22, 25) and doors (26, 27, 28) into their respective openings in the backs of the walls (2, 3, 4, 5) as shown.
2. Push the "glass" panels (20, 23, 24) onto the pegs on the backs of the walls, as illustrated, thereby covering over the window areas.
3. Glue the completed walls (2, 3, 4, 5) together and to the base (1).



4. Glue the shed (7, 8, 9, 10) together and to the back of wall #4.

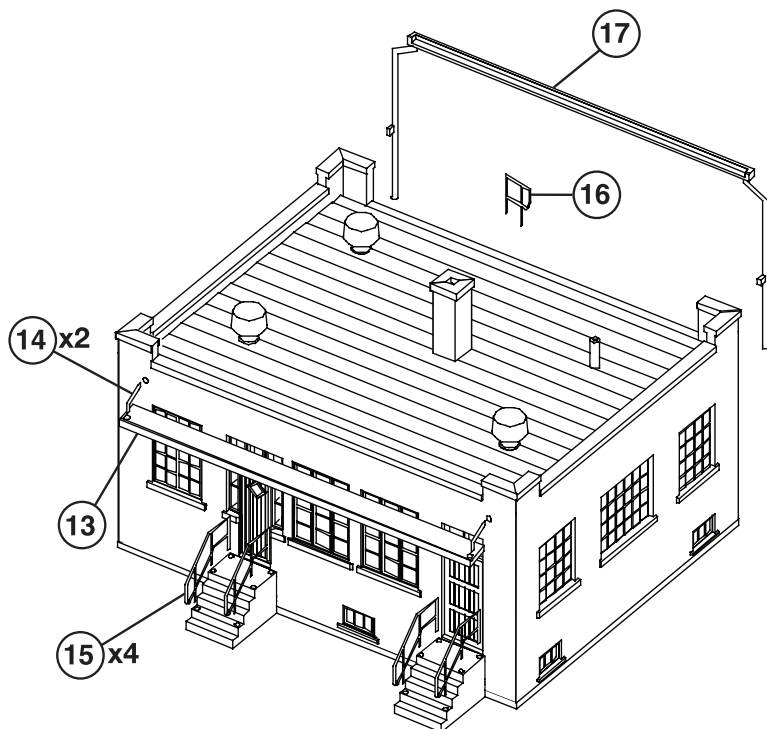
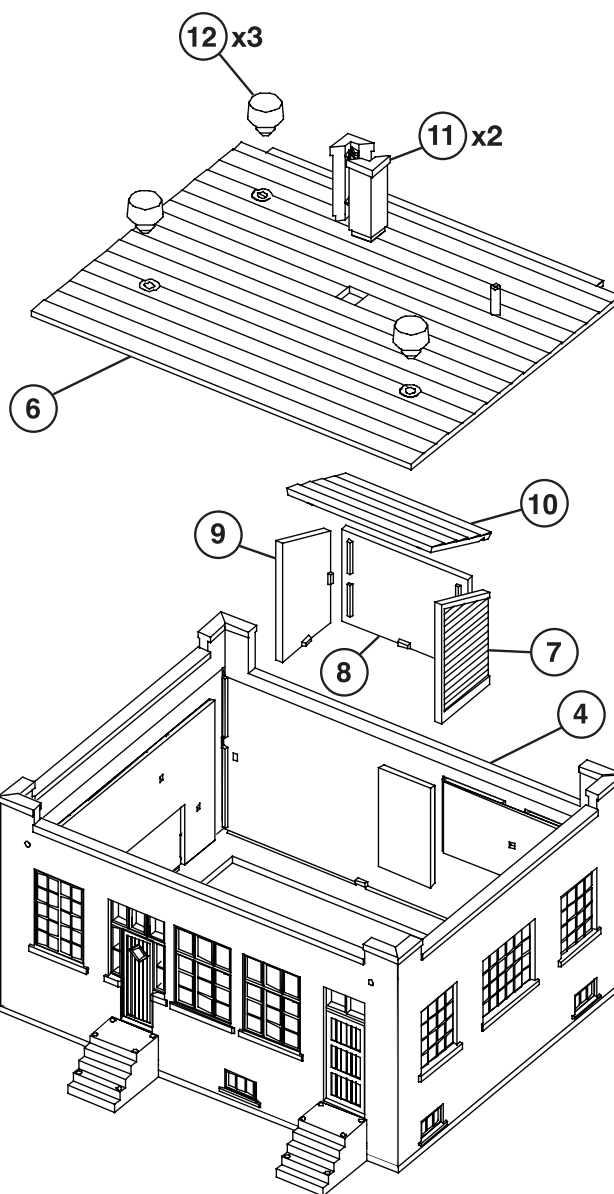
5. Glue the roof (6) in place.

6. Glue the vents (12) into the holes in the roof. Glue the chimney (11) together and then to the roof.

7. Glue the handrails (15, 16) into the holes in the stairways where shown. Note: The back stairway has only one handrail (16).

8. Glue the gutter/downspouts (17) to the back wall.

9. Glue the brackets (14) to the awning (13). Glue this into the holes in the front wall.



DECALING

1. After cutting out the decal, dip in water for 10 seconds, remove and let stand for 1 minute. Slide decal onto surface, position and then blot off any excess water.

2. Lightly brush Micro Sol® on top. This will soften the decal allowing it to conform to irregular surfaces. DO NOT TOUCH DECAL while wet!

3. When the decal is thoroughly dry, check for any trapped air bubbles. Prick them with the point of a small pin or hobby knife blade and apply more Micro Sol®.